

**REGIONAL SPECIALISED METEOROLOGICAL CENTRE -
TROPICAL CYCLONES, NEW DELHI TROPICAL WEATHER OUTLOOK**

DEMS-RSMC SPECIAL TROPICAL CYCLONES NEW DELHI DATED 12.03.2022

TROPICAL WEATHER OUTLOOK FOR NORTH INDIAN OCEAN (THE BAY OF BENGAL AND ARABIAN SEA) VALID FOR NEXT 120 HOURS ISSUED AT 0600 UTC OF 12.03.2022 BASED ON 0300 UTC OF 12.03.2022.

BAY OF BENGAL:

SCATTERED LOW AND MEDIUM CLOUDS WITH EMBEDDED MODERATE TO INTENSE CONVECTION LAY OVER SOUTH BAY OF BENGAL AND ISOLATED WEAK TO MODERATE CONVECTION LAY OVER REST OF BAY OF BENGAL, WEST PARTS OF NORTH ANDAMAN SEA. ISOLATED TO SCATTERED LOW AND MEDIUM CLOUDS OVER REST OF ANDAMAN SEA.

PROBABILITY OF CYCLOGENESIS (FORMATION OF DEPRESSION) DURING NEXT 120 HRS:

24 HOURS	24-48 HOURS	48-72 HOURS	72-96 HOURS	96-120 HOURS
NIL	NIL	NIL	NIL	NIL

ARABIAN SEA:

SCATTERED LOW AND MEDIUM CLOUDS WITH EMBEDDED WEAK CONVECTION OVER EXTREME NORTHWEST & EAST CENTRAL ARABIAN SEA OFF SOUTH MAHARASHTRA-GO A COASTS AND EXTREME SOUTHEAST ARABIAN SEA. SCATTERED LOW AND MEDIUM CLOUDS OVER REST OF SOUTH ARABIAN SEA.

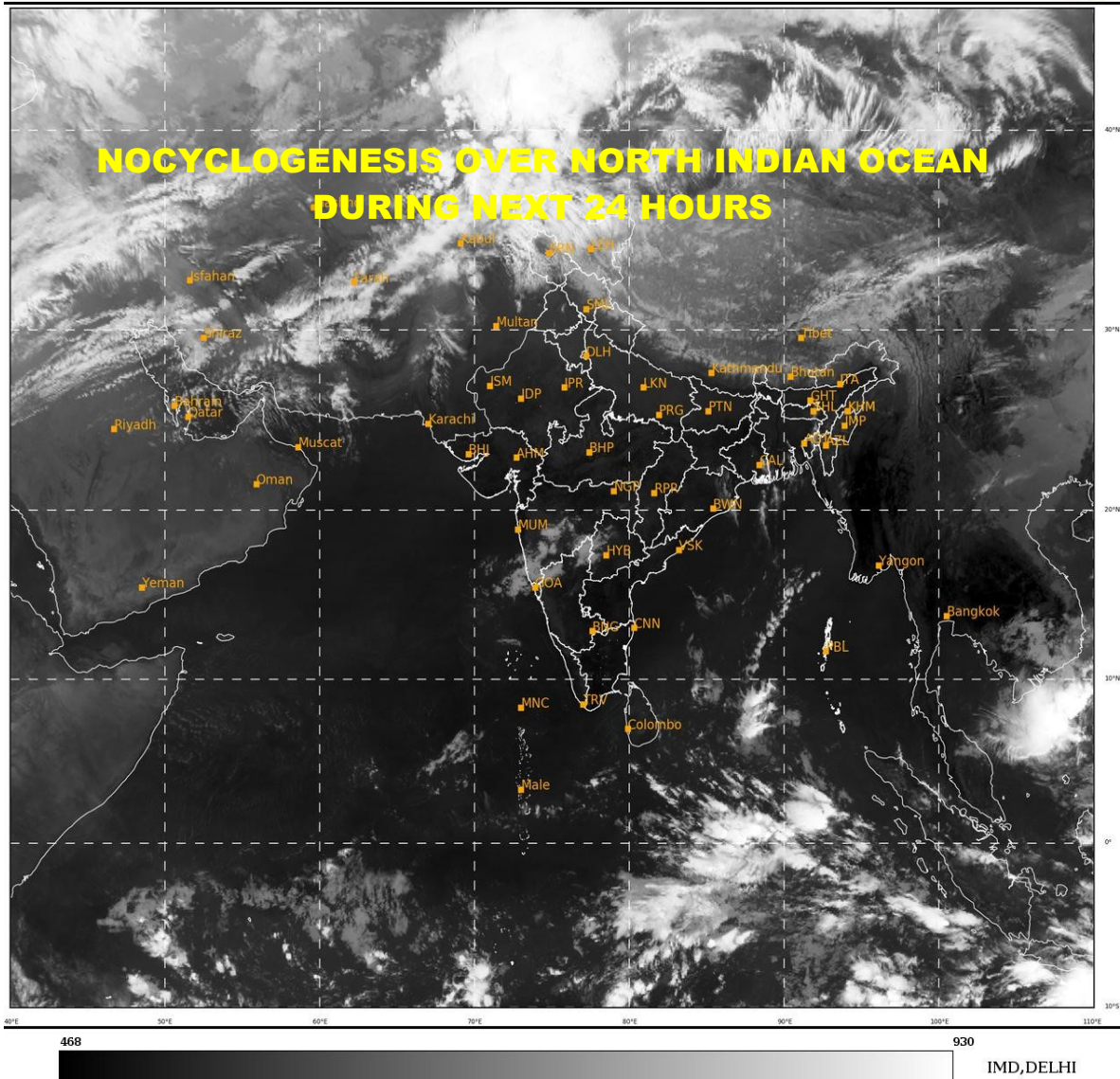
PROBABILITY OF CYCLOGENESIS (FORMATION OF DEPRESSION) DURING NEXT 120 HRS:

24 HOURS	24-48 HOURS	48-72 HOURS	72-96 HOURS	96-120 HOURS
NIL	NIL	NIL	NIL	NIL

REMARKS: NIL.

SAT : INSAT-3D IMG
IMG_TIR1 10.8 um
LIC Mercator

12-03-2022/(0300 to 0327) GMT
12-03-2022/(0830 to 0857) IST



PROBABILITY OF CYCLOGENESIS (FORMATION OF DEPRESSION):NIL: 0%, LOW: 1-33%, , MODERATE: 34-66% AND HIGH: 67-100% This is a guidance Bulletin for the WMO/ESCAP Panel Member countries,. Please visit respective National websites for Country specific Bulletins